

THE BLACK CAT

IAN DETERLING



FLEXIBLE OCTET

For Preview Only

The Black Cat, Op. 13

flexible octet



Cover art: *Béla* (2019) by Ian Deterling

Copyright © 2019 Deterling Music (ASCAP)
iandeterling.com

The music, text, and design in this publication are protected by copyright law.
Any duplication or transmission, by any means (electronic, mechanical, photocopying,
or otherwise), without permission is an infringement of copyright law.
Infringers are liable under the law.

Please feel free to post public performances/audio of performances of *The Black Cat*. I'm only asked that I'm notified and listed as composer. Contact me directly at iandeterling.com/contact

Program Notes

The Black Cat is a piece about my cat, Béla. I was sitting next to a campfire behind my apartment when I suddenly heard a cat meowing behind me. I turned around and saw this beautiful black cat with green eyes. He walked towards me, slowly crawled up into my lap, and fell asleep. He didn't belong to any of the neighbors, and no one claimed him when I brought him to the Humane Society - so I adopted him and named him Béla. He's a playful and frisky cat that spends most of his time sleeping; however, Béla also gets into mischief once in a while... and I wanted to capture all of this in the music. This piece is about him - the black cat.

Duration: about 7'00"

The Black Cat was premiered on December 8th, 2019 in Duluth, MN (U.S.) by the North Wind Flute Choir - Melanie Sever, director.

Instruments:

Part 1

Flute; Piccolo; E \flat Clarinet

Part 2

Flute; Oboe; B \flat Clarinet; Soprano Saxophone

Part 3

B \flat Clarinet; Soprano Saxophone; Alto Saxophone

Part 4

B \flat Clarinet; B \flat Trumpet; Alto Saxophone

Part 5

B \flat Clarinet; B \flat Trumpet; Alto Saxophone

Part 6

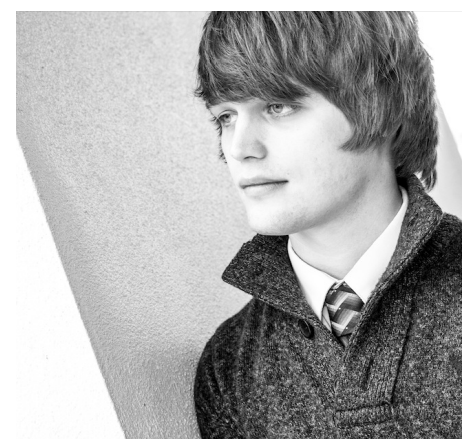
F Horn; E \flat Alto Clarinet; Tenor Saxophone; Bassoon; Euphonium

Part 7

Bass Clarinet; Baritone Saxophone; Trombone; Euphonium; Bassoon

Part 8

Contrabass Clarinet; Contrabassoon; Contrabass; Tuba



About the Composer

As a composer and arranger, I strive to find a balance between making a work aesthetically intriguing while accessible for musicians of varying skill levels. My works have been performed by educational ensembles at high schools and colleges as well as amateur community bands, orchestras, and ensembles all around the world. More demanding works in my portfolio have attracted the attention of members from prestigious organizations such as the London Symphony Orchestra, the São Paulo State Symphony, and the San Antonio Symphony.

I carry not only a passion for creating, but a devotion to sharing my work, ideas, and unquenchable thirst for knowledge. In pursuit of a deeper understanding of everyday life, I teach students to approach their education with enthusiasm and to always reach for deeper insight. I guide them to overcoming their fear of failure and self doubt - especially those that are transitioning into college for the first time. I live by the principles I teach and strive to maintain relevance as an instructor in my field through frequent performances of my works, my creative portfolio, and my professional network. As a lifelong learner, I am continuously experimenting with new techniques, approaches, and ideas

THE BLACK CAT, OP. 13

IAN DETERLING

Part 1 $\text{♩} = 100$

Flute/
Piccolo 1

E♭ Clarinet 1

Part 2

Flute/
Oboe 2 *a2*
p delicately *mf*

B♭ Clarinet/
Soprano Saxophone 2 *a2*
p delicately *mf*

Part 3

B♭ Clarinet/
Soprano Saxophone 3 *a2*
p delicately *mf*

Alto Saxophone 3 *p delicately* *mf*

Part 4

B♭ Clarinet/
B♭ Trumpet 4 *a2*
p delicately *mf* *mp* *p* *mf*

Alto Saxophone 4 *p delicately* *mf* *mp* *p* *mf*

Part 5

B♭ Clarinet/
B♭ Trumpet in 5 *p delicately* *mp* *p* *mf*

Alto Saxophone 5 *p delicately* *mp* *p* *mf*

Part 6 $\text{♩} = 100$

F Horn 6 *p delicately* *mp* *p* *mf*

E♭ Alto Clarinet 6 *p delicately* *mp* *p* *mf*

Tenor Saxophone 6 *p delicately* *mp* *p* *mf*

Bassoon/
Euphonium 6 *a2*
p delicately *mp* *p* *mf*

Part 7

Bass Clarinet 7 *p delicately* *mp* *p* *mf*

Baritone Saxophone 7 *p delicately* *mp* *p* *mf*

Trombone/
Euphonium/
Bassoon 7 *a3*
p delicately *mp* *p* *mf*

Part 8

Contrabass Clarinet 8

Contrabassoon/
Contrabass/
Tuba 8

②

③

④

⑤

THE BLACK CAT, OP. 13

9

Fl./ Picc. 1
 Picc
mf delicately 6 *p*

E♭ Cl. 1
mf delicately 6 *p*

Fl./ Ob. 2
 5 *p*

B♭ Cl. 2
 5 *p*

B♭ Cl. 3
 5 6 *p*

A. Sax. 3
 5 6 *p*

B♭ Cl./ B♭ Tpt. 4
p < mf *f* *p legato* 6

A. Sax. 4
p < mf *f* *p legato* 6

B♭ Cl./ B♭ Tpt. 5
p < mf *f* *p legato*

A. Sax. 5
p < mf *f* *p legato*

Hn. 6
p < mf *f* *p legato* 5

A. Cl. 6
p < mf *f* *p legato* 5

T. Sax. 6
p < mf *f* *p legato* 5

Bsn./ Eph. 6
p < mf *f* *p legato* 5

B. Cl. 7
p < mf *f* *p legato* 6

B. Sax. 7
p < mf *f* *p legato* 6

Tbn./ Eph./ Bsn. 7
p < mf *f* *p legato* 6

Cb. Cl. 8
mf delicately *f*

Cbsn./ Cb./ Tba 8
 Cbsn/Cb
mf delicately *f*



THE BLACK CAT, OP. 13

The musical score for 'THE BLACK CAT, OP. 13' is presented in a multi-staff format. The instruments and parts include:
- Fl. 1/Picc. 1: Starts with a dynamic of *p*, marked with a fingering of 5 and an *a2* marking. Dynamics change to *mf*.
- Eb Cl. 1: Mirrors the first flute part with a dynamic of *p* and a fingering of 5.
- Fl./Ob. 2: Starts with a dynamic of *p* and a fingering of 6. Dynamics change to *mf*.
- Bb Cl. 2: Mirrors the second flute/oboe part with a dynamic of *p* and a fingering of 6.
- Bb Cl. 3: Mirrors the third flute/oboe part with a dynamic of *p* and a fingering of 6.
- A. Sax. 3: Mirrors the third flute/oboe part with a dynamic of *p* and a fingering of 6.
- Bb Cl./Bb Tpt. 4: Starts with a dynamic of *mf*.
- A. Sax. 4: Starts with a dynamic of *mf*.
- Bb Cl./Bb Tpt. 5: Starts with a dynamic of *mf*.
- A. Sax. 5: Starts with a dynamic of *mf*.
- Hn. 6: Starts with a dynamic of *mf*.
- A. Cl. 6: Starts with a dynamic of *mf*.
- T. Sax. 6: Starts with a dynamic of *mf*.
- Bsn./Eph. 6: Starts with a dynamic of *mf*.
- B. Cl. 7: Starts with a dynamic of *mf*.
- B. Sax. 7: Starts with a dynamic of *mf*.
- Tbn./Eph./Bsn. 7: Starts with a dynamic of *mf*.
- Cb. Cl. 8: Starts with a dynamic of *mf*.
- Cbsn./Cb./Tba 8: Starts with a dynamic of *mf*.
A large red watermark 'FOR PREVIEW ONLY' is diagonally overlaid across the center of the score.

THE BLACK CAT, OP. 13

18

FL./ Picc. 1
f with greater energy

E♭ Cl. 1
f with greater energy

Fl./ Ob. 2
f with greater energy

B♭ Cl. 2
f with greater energy

B♭ Cl. 3
f with greater energy

A. Sax. 3
f with greater energy

B♭ Cl./ B♭ Tpt. 4
f with greater energy

A. Sax. 4
f with greater energy

B♭ Cl./ B♭ Tpt. 5
f with greater energy

A. Sax. 5
f with greater energy

Hn. 6
f with greater energy

A. Cl. 6
f with greater energy

T. Sax. 6
f with greater energy

Bsn./ Eph. 6
f with greater energy

B. Cl. 7
f with greater energy

B. Sax. 7
f with greater energy

Tbn./ Eph./ Bsn. 7
f with greater energy

Cb. Cl. 8
f with greater energy

Cbsn./ Cb./ Tba 8
f with greater energy

p < f

18

THE BLACK CAT, OP. 13

Fl./ Picc. 1
E♭ Cl. 1
Fl./ Ob. 2
B♭ Cl. 2
B♭ Cl. 3
A. Sax. 3
B♭ Cl./ B♭ Tpt. 4
A. Sax. 4
B♭ Cl./ B♭ Tpt. 5
A. Sax. 5
Hn. 6
A. Cl. 6
T. Sax. 6
Bsn./ Eph. 6
B. Cl. 7
B. Sax. 7
Tbn./ Eph./ Bsn. 7
Cb. Cl. 8
Cbsn./ Cb./ Tba 8

23 24 25 26 27

THE BLACK CAT, OP. 13

The score is for a woodwind and brass ensemble. It consists of 18 staves, each with a specific instrument or role:

- Fl./Picc. 1
- E♭ Cl. 1
- Fl./Ob. 2
- B♭ Cl. 2
- B♭ Cl. 3
- A. Sax. 3
- B♭ Cl./B♭ Tpt. 4
- A. Sax. 4
- B♭ Cl./B♭ Tpt. 5
- A. Sax. 5
- Hn. 6
- A. Cl. 6
- T. Sax. 6
- Bsn./Eph. 6
- B. Cl. 7
- B. Sax. 7
- Tbn./Eph./Bsn. 7
- Cb. Cl. 8
- Cbsn./Cb./Tba 8

The score is marked with *ff* (fortissimo) in several places. A large red watermark "FOR PREVIEW ONLY" is overlaid across the score.

THE BLACK CAT, OP. 13

35

FL./ Picc. 1
Eb Cl. 1
Fl./ Ob. 2
Bb Cl. 2
Bb Cl. 3
A. Sax. 3
Bb Cl./ Bb Tpt. 4
A. Sax. 4
Bb Cl./ Bb Tpt. 5
A. Sax. 5
Hn. 6
A. Cl. 6
T. Sax. 6
Bsn./ Eph. 6
B. Cl. 7
B. Sax. 7
Tbn./ Eph./ Bsn. 7
Cb. Cl. 8
Cbsn./ Cb./ Tba 8

p *pp* *ff slightly edgy* *f slightly edgy* *fp*

THE BLACK CAT, OP. 13

40

Fl./ Picc. 1
ff slightly edgy
fp *pp* legato

E♭ Cl. 1
ff slightly edgy
fp *pp* legato

Fl./ Ob. 2
fp *pp* legato

B♭ Cl. 2
fp *pp* legato

B♭ Cl. 3
fp *pp* legato

A. Sax. 3
fp *pp* legato

B♭ Cl./ B♭ Tpt. 4
f *ff* *fp* *pp* legato

A. Sax. 4
f *ff* *fp* *pp* legato

B♭ Cl./ B♭ Tpt. 5
f *fp* *pp* legato

A. Sax. 5
f *fp* *pp* legato

40

Hn. 6
f *fp* *pp* legato

A. Cl. 6
f *fp* *pp* legato

T. Sax. 6
f *fp* *pp* legato

Bsn./ Eph. 6
f *fp* *pp* legato

B. Cl. 7
f *fp* *pp* legato

B. Sax. 7
f *fp* *pp* legato

Tbn./ Eph./ Bsn. 7
f *fp* *pp* legato

Cb. Cl. 8
f *fp*

Cbsn./ Cb./ Tba 8
f *fp*

THE BLACK CAT, OP. 13

FL./ Picc. 1 *mf edgy*

E♭ Cl. 1 *mf edgy*

Fl./ Ob. 2 *mf edgy*

B♭ Cl. 2 *mf edgy*

B♭ Cl. 3 *mf edgy*

A. Sax. 3 *mf edgy*

B♭ Cl./ B♭ Tpt. 4 *mf edgy*

A. Sax. 4 *mf edgy*

B♭ Cl./ B♭ Tpt. 5 *mf edgy*

A. Sax. 5 *mf edgy*

Hn. 6 *mf edgy*

A. Cl. 6 *mf edgy*

T. Sax. 6 *mf edgy*

Bsn./ Eph. 6 *mf edgy*

B. Cl. 7 *mf edgy*

B. Sax. 7 *mf edgy*

Tbn./ Eph./ Bsn. 7 *mf edgy*

Cb. Cl. 8 *pp* *mf edgy*

Cbsn./ Cb./ Tba 8 *pp* *mf edgy*

THE BLACK CAT, OP. 13

50

Fl./ Picc. 1

Picc

a2

ff with energy

E♭ Cl. 1

ff with energy

Fl./ Ob. 2

Ob

ff with energy

B♭ Cl. 2

ff with energy

B♭ Cl. 3

ff with energy

A. Sax. 3

ff with energy

B♭ Cl./ B♭ Tpt. 4

ff with energy

A. Sax. 4

ff with energy

B♭ Cl./ B♭ Tpt. 5

ff with energy

A. Sax. 5

ff with energy

50

Hn. 6

heavy

ff with energy

A. Cl. 6

heavy

ff with energy

T. Sax. 6

heavy

ff with energy

Bsn./ Eph. 6

heavy

ff with energy

B. Cl. 7

heavy

ff with energy

B. Sax. 7

heavy

ff with energy

Tbn./ Eph./ Bsn. 7

heavy

ff with energy

Cb. Cl. 8

heavy

ff with energy

Cbsn./ Cb./ Tba 8

heavy

ff with energy

Some pages have been omitted for preview